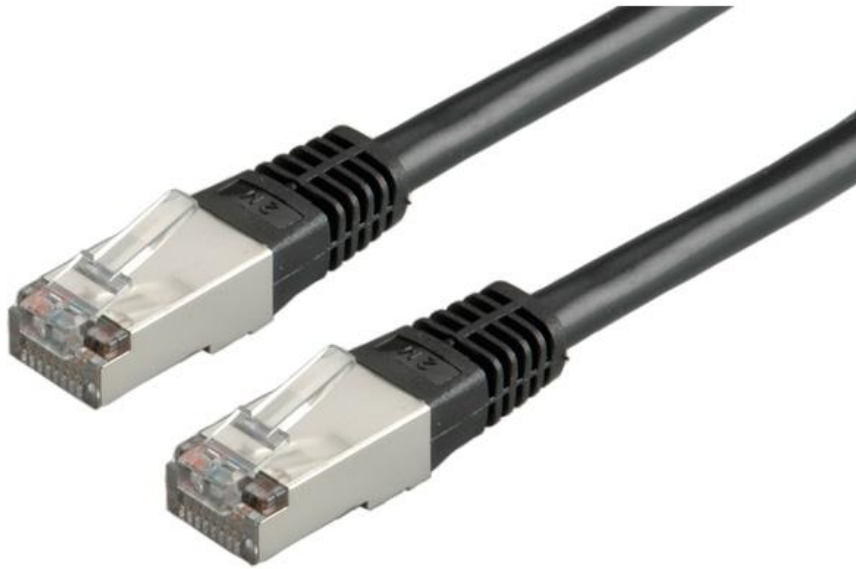




Datenblatt - Fiche technique - Data sheet

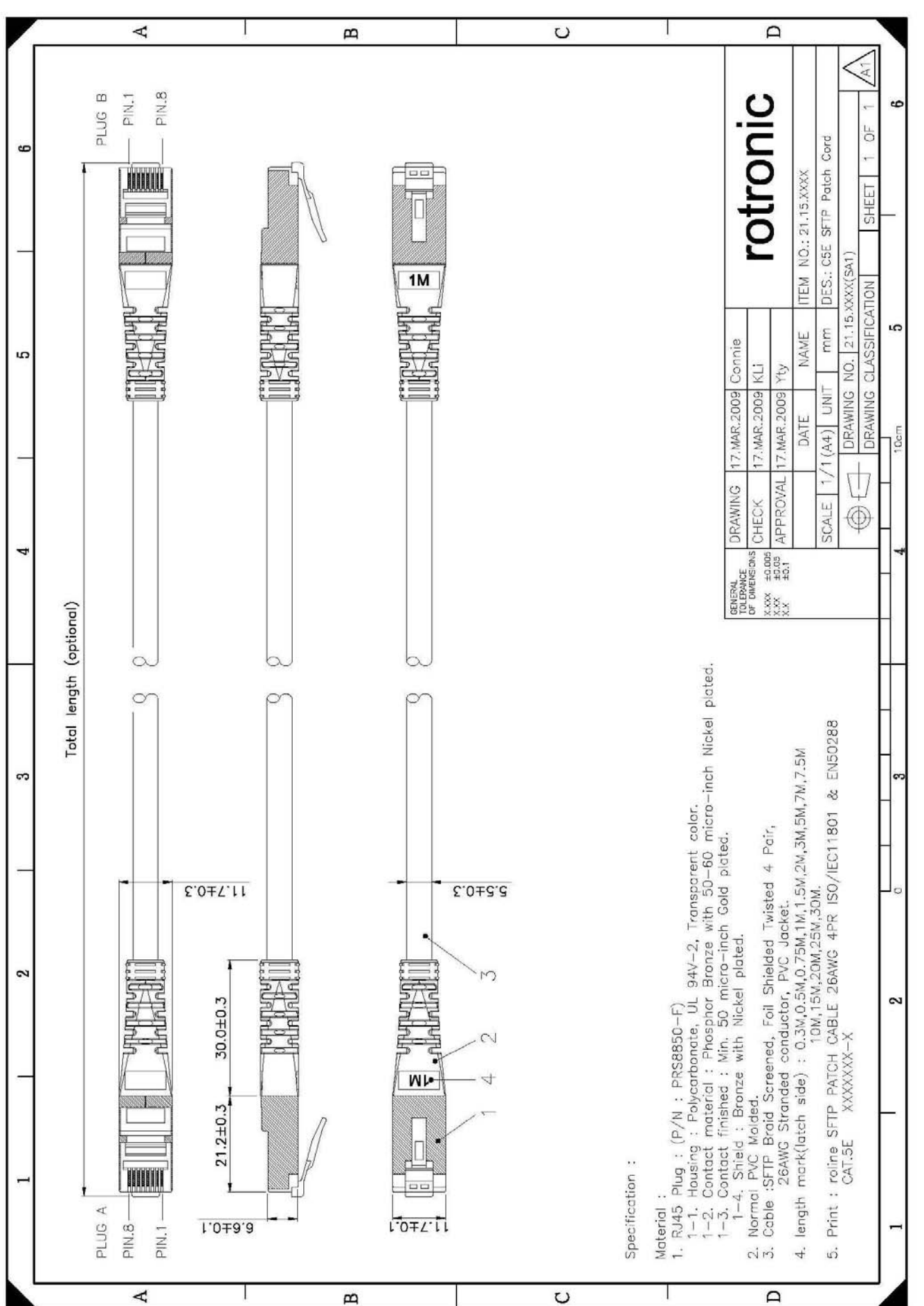
21.15.0365



ROLINE S/FTP-Patchkabel konf. Kategorie 5e, schwarz, 5,0 m

Cordon ROLINE Cat.5e S/FTP AWG26, noir, 5,0 m

ROLINE S/FTP Patch Cord Cat.5e, black, 5.0 m



Total length (optional)

Specification :

- Material :
- RJ45 Plug : (P/N : PRS8850-F)
 - 1-1. Housing : Polycarbonate, UL 94V-2, Transparent color.
 - 1-2. Contact material : Phosphor Bronze with 50-60 micro-inch Nickel plated.
 - 1-3. Contact finished : Min. 50 micro-inch Gold plated.
 - 1-4. Shield : Bronze with Nickel plated.
 - Normal PVC Molded.
 - Cable :SFTP Braid Screened, Foil Shielded Twisted 4 Pair, 26AWG Stranded conductor, PVC Jacket.
 - length mark(latch side) : 0.3M,0.5M,0.75M,1M,1.5M,2M,3M,5M,7M,7.5M,10M,15M,20M,25M,30M.
 - Print : roline SFTP PATCH CABLE 26AWG 4PR ISO/IEC11801 & EN50288
CAT.5E XXXXXX-X

GENERAL TOLERANCE OF DIMENSIONS		DRAWING		17.MAR.2009		Connie	
X.XXX ±0.005		CHECK	17.MAR.2009	KLI		rotronic	
X.XX ±0.03		APPROVAL	17.MAR.2009	Yty		ITEM NO.: 21.15.XXXX	
X.X ±0.1		SCALE		1/1 (A4)	UNIT	mm	DES.: C5E SFTP Patch Cord
		DRAWING NO.		21.15.XXXX(SA1)		DRAWING CLASSIFICATION	
		DATE		NAME		SHEET 1 OF 1	
		DRAWING CLASSIFICATION		SHEET 1 OF 1		6	

10cm

Remark#

21.1.15.0300	ROLINE S/FTP Cable Cat.5e, grey, 0.5	21.1.15.0382	ROLINE S/FTP Cable Cat.5e, yellow, 0.5m
21.1.15.0301	ROLINE S/FTP Cable Cat.5e, grey, 1.0	21.1.15.0383	ROLINE S/FTP Cable Cat.5e, green, 0.5m
21.1.15.0302	ROLINE S/FTP Cable Cat.5e, grey, 2.0	21.1.15.0384	ROLINE S/FTP Cable Cat.5e, blue, 0.5m
21.1.15.0307	ROLINE S/FTP Cable Cat.5e, grey, 7.0	21.1.15.0385	ROLINE S/FTP Cable Cat.5e, black, 0.5m
21.1.15.0310	ROLINE S/FTP Cable Cat.5e, grey, 10m	21.1.15.0721	ROLINE S/FTP Cable Cat.5e, red, 10m
21.1.15.0315	ROLINE S/FTP Cable Cat.5e, grey, 15m	21.1.15.0722	ROLINE S/FTP Cable Cat.5e, yellow, 10m
21.1.15.0320	ROLINE S/FTP Cable Cat.5e, grey, 20m	21.1.15.0723	ROLINE S/FTP Cable Cat.5e, green, 10m
21.1.15.0331	ROLINE S/FTP Cable Cat.5e, red, 1.0m	21.1.15.0724	ROLINE S/FTP Cable Cat.5e, blue, 10m
21.1.15.0332	ROLINE S/FTP Cable Cat.5e, yellow, 1.0m	21.1.15.0725	ROLINE S/FTP Cable Cat.5e, black, 10m
21.1.15.0333	ROLINE S/FTP Cable Cat.5e, green, 1.0m	21.1.15.0731	ROLINE S/FTP Cable Cat.5e, red, 15m
21.1.15.0334	ROLINE S/FTP Cable Cat.5e, blue, 1.0m	21.1.15.0732	ROLINE S/FTP Cable Cat.5e, yellow, 15m
21.1.15.0335	ROLINE S/FTP Cable Cat.5e, black, 1.0m	21.1.15.0733	ROLINE S/FTP Cable Cat.5e, green, 15m
21.1.15.0341	ROLINE S/FTP Cable Cat.5e, red, 2.0m	21.1.15.0734	ROLINE S/FTP Cable Cat.5e, blue, 15m
21.1.15.0342	ROLINE S/FTP Cable Cat.5e, yellow, 2.0m	21.1.15.0735	ROLINE S/FTP Cable Cat.5e, black, 15m
21.1.15.0343	ROLINE S/FTP Cable Cat.5e, green, 2.0m	21.1.15.0741	ROLINE S/FTP Cable Cat.5e, red, 20m
21.1.15.0344	ROLINE S/FTP Cable Cat.5e, blue, 2.0m	21.1.15.0742	ROLINE S/FTP Cable Cat.5e, yellow, 20m
21.1.15.0345	ROLINE S/FTP Cable Cat.5e, black, 2.0m	21.1.15.0743	ROLINE S/FTP Cable Cat.5e, green, 20m
21.1.15.0351	ROLINE S/FTP Cable Cat.5e, red, 3.0m	21.1.15.0744	ROLINE S/FTP Cable Cat.5e, blue, 20m
21.1.15.0352	ROLINE S/FTP Cable Cat.5e, yellow, 3.0m	21.1.15.0745	ROLINE S/FTP Cable Cat.5e, black, 20m
21.1.15.0353	ROLINE S/FTP Cable Cat.5e, green, 3.0m		
21.1.15.0354	ROLINE S/FTP Cable Cat.5e, blue, 3.0m		
21.1.15.0355	ROLINE S/FTP Cable Cat.5e, black, 3.0m		
21.1.15.0361	ROLINE S/FTP Cable Cat.5e, red, 5.0m		
21.1.15.0362	ROLINE S/FTP Cable Cat.5e, yellow, 5.0m		
21.1.15.0363	ROLINE S/FTP Cable Cat.5e, green, 5.0m		
21.1.15.0364	ROLINE S/FTP Cable Cat.5e, blue, 5.0m		
21.1.15.0365	ROLINE S/FTP Cable Cat.5e, black, 5.0m		
21.1.15.0381	ROLINE S/FTP Cable Cat.5e, red, 0.5m		

CATEGORY 5E SF/UTP PATCH CABLE 4 PAIR



Category 5E SF/UTP cables are designed to meet the most advanced SF/UTP cable applications. Tested to 100 MHz, the guaranteed performance of this cable meets the ISO/IEC 11801 and EN50288 requirements for PS-NEXT, attenuation, return loss, attenuation-to-crosstalk ratio (ACR) and impedance, making it ideal for high-end transmission links supporting today's networking protocols

CONSTRUCTION

26 AWG bare copper wire insulated with polyethylene. Two insulated conductors twisted together to form a pair and four such pairs cabled to form the basic unit jacketed with flame-retardant PVC.

STANDARDS

International	ISO/IEC 11801
European	EN50288

FLAME RATING

UL 444 CM, CMR

APPLICATIONS

Category 5E SF/UTP cable is intended for high speed data applications including:

IEEE 802.3 1000BASE-T, 10BASE-T, 155 Mb/s ATM, 4/16 Mb/s Token Ring

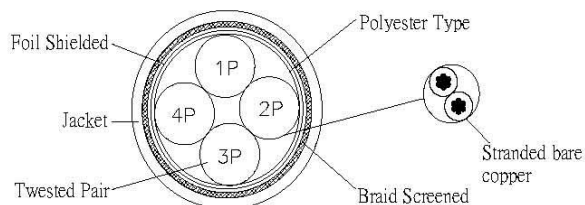
FEATURES

- Specified and tested to 100 MHz
- Small, round design pairs

BENEFITS

- Reliably supports today's network protocols
- Reduced installation costs and maintenance
- Lower Bit Error Rates, increases network efficiency and uptime

CATEGORY 5E SF/UTP PATCH CABLE 4 PAIR



Construction

Twisted Pairs Color Code:

1. PAIR 1: Blue, White/Blue
2. PAIR 2: Orange, White/Orange
3. PAIR 3: Green; White/Green
4. PAIR 4: Brown; White/Brown

Component

1. Conductor: AWG 26
2. Insulators: HDPE (Min. Thickness 0.153, Min. Avg. thickness 0.178)
3. Insulators Diameter: 0.80~0.83mm
4. Mylar Tape: 20 x 0.02 ± 0.01
5. Al-Mylar Tape: 20 x 0.038 ± 0.002
6. Copper Brad: 0.10 x 80
7. Jacket: 75°C PVC (Min. Thickness 0.58, Min. Avg. thickness 0.46)
8. Jacket Diameter: 5.5 ± 0.2mm

Marking

SF/UTP PATCH CABLE 26AWG 4PR 75°C (UL) E178558 CM rated
ISO/IEC11801 & EN50288 CAT.5E XXXXXX-X
or customization

Physical Characters

Un-aged:

1. Tensile strength: Polyolefin 2400PSI, Jacket (PVC) 2000PSI
2. Elongation: Polyolefin 300% min. Jacket (PVC) 100% min

After Aging:

1. Tensile strength: Polyolefin 75%min. Jacket (PVC) 85% min
2. Elongation: Polyolefin 75%min. Jacket (PVC) 50% min

Electric Characters

1. Voltage rating: 300V
2. Temperature rating: 75°C
3. Dielectric strength: DC 2.5 KV / 2sec. or AC1.75 KV / 2sec.
4. Mutual Capacitance: 5.6 nF/100M nom.
5. Pair to ground : 330pF/100m max
6. Conductor DC resistance: 142 Ohms/km max. at 20°C.
7. DC Resistance Unbalance: 5% max.
8. Characteristic Impedance: 100±15 Ohms 1~100MHz
9. Propagation Delay skew: 45ns/100m max. 1~100MHz
10. Velocity of Propagation: 70%

FREQ MHz	Attenuation (max. dB/100m)	NEXT (min. dB)	RL (min. dB at 20°C)	PSNEXT (min. dB)	ELFEXT (min. dB)	PSELFEXT (min. dB)	DELAY (max. ns at 20°C)
1	2.9	65.3	20.0	62.3	63.0	60.8	570.2
4	5.9	56.3	23.0	53.3	51.7	48.7	552.0
8	8.4	51.8	24.5	48.8	45.7	42.7	546.7
10	9.4	50.3	25.0	47.3	43.8	40.8	545.0
16	11.8	47.2	25.0	44.4	39.7	36.7	543.0
20	13.3	45.8	25.0	42.8	37.7	34.7	542.0
25	15.0	44.3	24.2	41.3	35.8	32.8	541.2
31.25	16.8	42.9	23.3	39.9	33.9	30.9	540.4
62.50	24.5	36.4	20.7	35.4	27.8	24.8	538.6
100	31.7	35.3	19.0	32.3	23.8	20.8	538.0
200	-	-	-	-	-	-	-
250	-	-	-	-	-	-	-